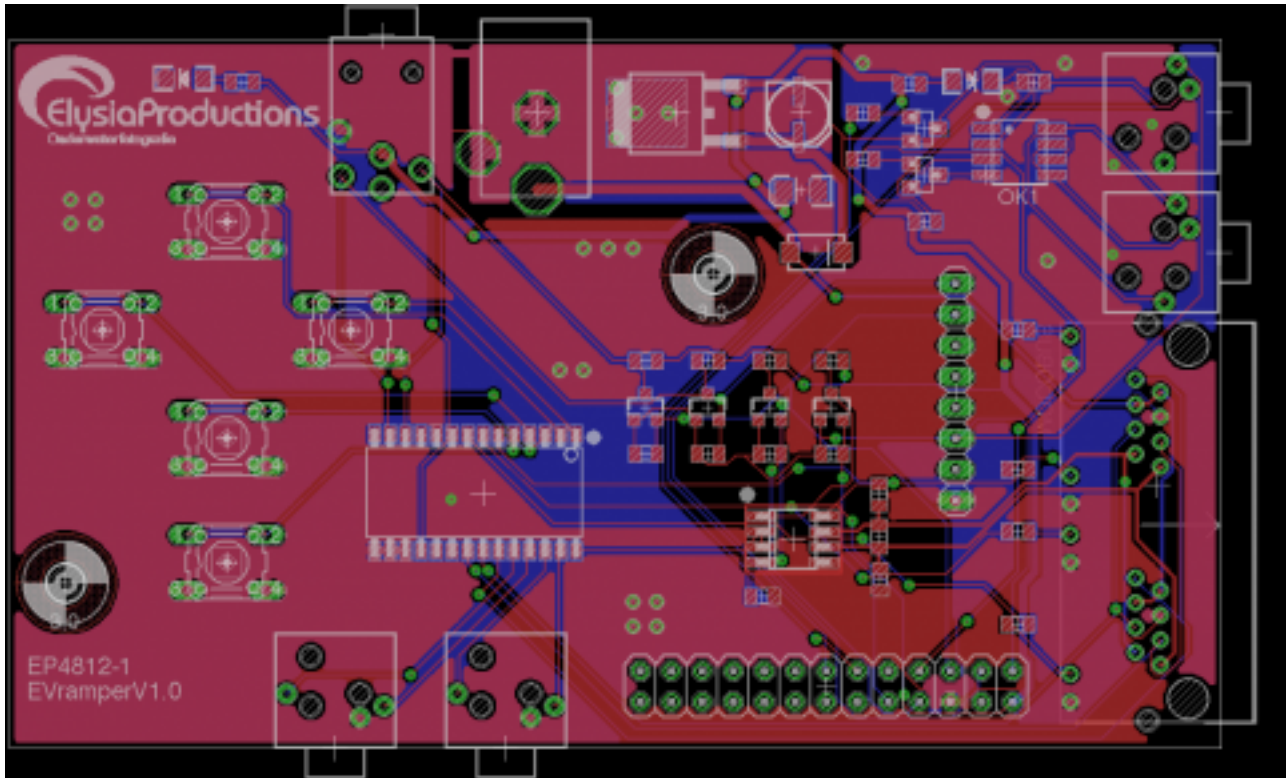




The ElysiaVisuals time lapse controller hardware is reaching the Beta phase

Door andre op vr, 11/30/2012 - 21:53



[1]

Here is a sneak preview of our time lapse controller board. We have teamed up with another company to speed up the development of the electronics. The first 20 boards are ordered and we cannot wait to assemble a few of them. We don't want to give away all the specifications yet, but you can expect a lot of features.

You can control this time lapse controller via Bluetooth, WiFi, Dynamic Perceptions' Microbus or through the native user interface of the controller itself. We have also included connectivity with the MX2 motion controller, the eMotimo and other time lapse devices.

Our next blog about the controller will feature real-life pictures of the assembled controller. We hope to put them on our website in a week or two from now. There is still an awful lot of coding to do, but we can now at least code against real hardware and not a bunch of electronic components that are connected with wires on a breadboard.

[Blog](#) [2]

[Technologie Hoek](#) [3]

[day to night time lapse](#) [4]

[HDR time lapse](#) [5]

[exposure ramping](#) [6]



Bron-URL:<http://elysiavisuals.com/nl/content/elysiavisuals-time-lapse-controller-hardware-reaching-beta-phase>

Links

[1] <http://elysiavisuals.com/sites/default/files/field/image/board.png> [2]

<http://elysiavisuals.com/nl/article/blog> [3] <http://elysiavisuals.com/nl/article/technology-corner> [4]

<http://elysiavisuals.com/nl/tags/day-night-time-lapse> [5] <http://elysiavisuals.com/nl/tags/hdr-time-lapse>

[6] <http://elysiavisuals.com/nl/tags/exposure-ramping>